



It costs a dime to give a dollar.

If you could direct your taxes back to your community and make a difference in a child's life, wouldn't you?

PENNSYLVANIA'S EDUCATIONAL IMPROVEMENT TAX CREDIT PROGRAM (EITC)

allows you to do just that. If you pay state taxes in Pennsylvania, you can make a contribution to Kentucky Avenue School and receive 90% of that contribution back in the form of a tax credit.

Funds from EITC go directly to our need-based financial aid program, supporting students who would otherwise not be able to afford Kentucky Avenue School. Working together with local business partners and individual donors, we can achieve truly remarkable things in our school, our community, and our city.

Example Individual Contribution

TAXES

PA Taxable Income	\$130,000
PA Tax Liability (3.07%)	\$3,991
EITC Donation	\$3,900
PA Tax Credit	\$3,510
Federal Charitable Deduction	\$86

COST

Cash Donation	\$3,900
<i>Combined tax savings</i>	<i>-\$3,596</i>

Final Cost to Donor \$304

KAS receives \$3,900

Example assumes a couple Married Filing Jointly in the 22% marginal income tax bracket who elect to itemize deductions.

Why contribute?

Benefits for KAS

Your support can make a real difference in enhancing educational opportunities for all students, irrespective of their socioeconomic status or background. By contributing to the EITC program, you're investing in the future of our community and empowering the next generation to thrive.

Directing your EITC contribution to KAS helps to fund scholarships for KAS students. School funds, that would have gone to scholarships, are freed up to provide resources and opportunities that benefit all students.

Tax benefits for you

You can also receive substantial tax benefits. This includes a Pennsylvania tax credit of 90% of your donation for a 2-year commitment.

For individuals, the remaining 10% can be a charitable donation deduction on your Federal tax return.

Businesses may be able to claim 100% of your donation as a deduction on your federal taxes.

Please consult with your Tax Professional before donating to understand your full benefits.

VISIT KASLEARNNS.ORG/EITC FOR MORE INFORMATION!

Who can donate?

BUSINESSES must pay one or more eligible Pennsylvania taxes and be a qualifying business such as S Corporation, C Corporation, General Partnership, Limited Partnerships, or LLC.

INDIVIDUALS/HOUSEHOLDS with an annual income of \$115,000 and a PA personal income tax liability of \$3,500+ annually can qualify for this program.

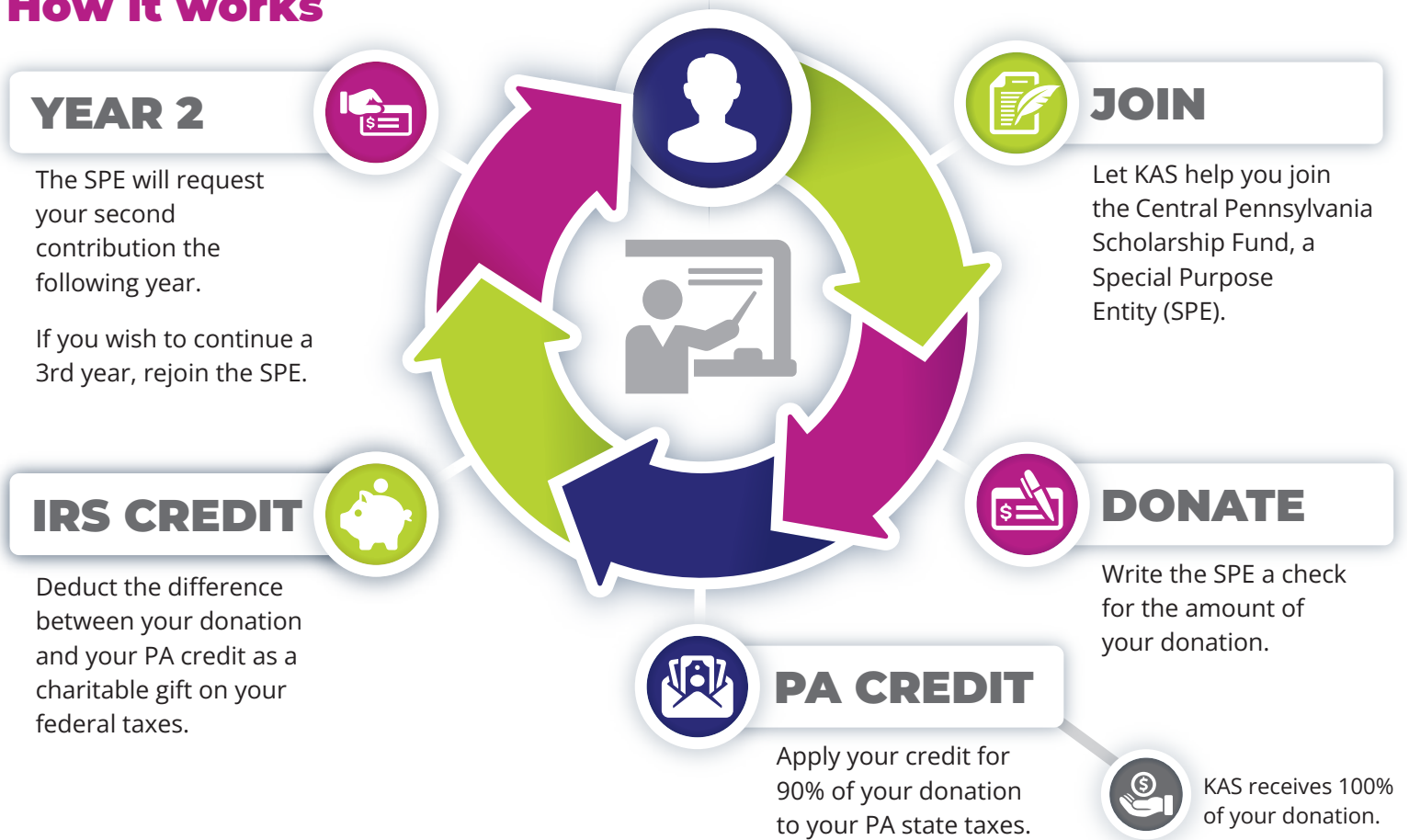
MINIMUM DONATION IS \$3,500, and participants must commit to participating for 2 years.

Quick Definitions

EITC – *Educational Improvement Tax Credits* are tax credits to eligible businesses and individuals contributing to fund scholarships for Pennsylvania students.

SPE – *Special Purpose Entity* is an organization that handles much of the paperwork for individuals and businesses applying for EITC.

How it works



VISIT KASLEARNNS.ORG/EITC FOR MORE INFORMATION!